



## 2766 1UP PRESSURE TESTER

The **2766 1UP Pressure Tester** with leak detection is a Hydraulic Burst Tester designed for customers in the field of development and production of angioplasty catheters. The control system gives the opportunity to choose different pressure cycles for products with specific requirements, and store these as a dataset. The machine delivers pressurized distilled water and can perform the following tests:

**Burst Test:** Pressure is built up continuously to the burst pressure.

**Compliance Test:** Pressure is built up in steps with up to 10 measurement points for each step.

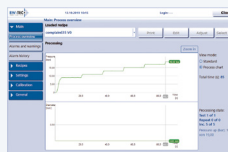
**Multiple Inflation Test:** A building up of the same pressure occurs repeatedly.



Measuring Gauge



Luer-Lock Connection



BW-TEC HMI

### Technical Specifications

- test pressure: 0 – 48 bar (0 – 670 psi)
- pressure medium: water (<math>< 100 \mu\text{S}/\text{cm}</math>)
- tolerance:  $\pm 0.1$  bar (1.45 psi)
- Mitutoyo measuring gauge: 0.001 mm
- product diameter max: 25.400 mm
- filling volume max: 50.0 ml
- filling speed: 0.1 – 10.0 ml/s
- w/leak detection
- connection: luer lock (male)
- bottle for distilled water
- simple user interface with BW-TEC HMI on touchscreen
- document test result: XPS or PDF
- PLC controller and tablet-PC for HMI and data management, network compatible
- dimensions (L x W x H): 700 x 300 x 300 mm
- weight: 25 kg
- power: 115/230 VAC, 400 W