

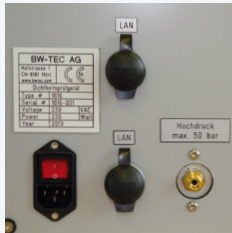


## LEAKTESTER 1942

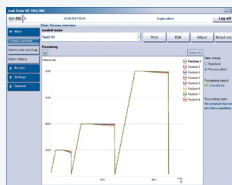
This device is used for the simultaneous final inspection of up to eight balloon catheters. The product is subjected to a specific pressure or vacuum and held for a defined time. The corresponding LED flashes when the pressure drops below the specification. The process parameters can be entered and managed via the user interface. The process data are displayed directly and can be visualised graphically in the test report. The process can consist of up to five parameter steps, which start automatically or manually. The balloons can be deflated with a vacuum pump after the test.



Luer Connectors



Interfaces



BW-TEC HMI

### Technical Specifications

- test connections: 8x Luer male
- pressure range: 0–50 bar (725 psi)
- pressure control accuracy:  $\pm 0.25$  bar ( $\pm 4$  psi)
- measurement accuracy: 0.01 bar (0.15 psi)
- vacuum: diaphragm pump 230 mbar (3.3 psi) absolute
- medium: air or N<sub>2</sub>
- process parameters: set pressure, pressure difference, pressure ramp, holding time and measuring time
- dimensions (L x W x H): 800 x 404 x 400 mm
- weight: 25 kg
- power: 240 W
- voltage: 110–240 VAC, 50–60 Hz