



LEAKTESTER 1616

This **Leaktester** is used for final inspection of balloon catheters.

The catheter can be checked on leakage and pressure. The product can be pressurized over a specific time. A red LED will illuminate if the pressure drops under a defined limit.

The process parameters are entered and managed by the HMI on the Tablet PC.

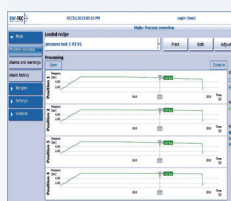
The actual diameter is also displayed on the HMI and a detailed process graph will be displayed.



Luer Connectors



Interfaces



BW-TEC HMI

Technical Specifications

- Pressure range 0–505 bar (0–725 psi)
- Tolerance +/- 0.25 bar (7.25 psi)
- Primary pressure max. 55 bar (798 psi)
- Medium: Air or N₂
- Process parameters: set pressure, pressure difference, ramp, holding time and measure time
- PLC Controller and HMI Interface on Tablet PC
- Network compatible
- Dimensions LxWxH 600 x 350 x 350 mm
- Weight 25 kg
- Power 100/230 VAC, 230 W

BW-TEC AG

HOFSTRASSE 1
CH-8181 HÖRI
SWITZERLAND
TEL +41 44 863 70 70
FAX +41 44 863 70 79
info@bwtec.com
www.bwtec.com