



## PRESSURE TESTER 1340

The new **Hydraulic Burst Tester** is designed for customers in the field of development and production of angioplasty catheters.

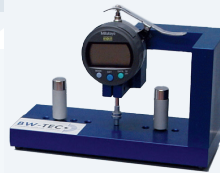
The flexible PLC control system gives the opportunity to choose different pressure cycles for products with specific requirements, and store these as a dataset. The hydraulic tester delivers pressurized distilled water and can perform the following tests.

**Burst Test:** Pressure is built up continuously to the burst pressure.

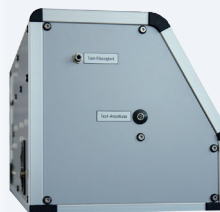
**Compliance Test:** Pressure is built up in steps. A time delay occurs after each step for measuring the balloon diameter.

**Multiple Inflation Test:** A building up of the same pressure occurs repeatedly.

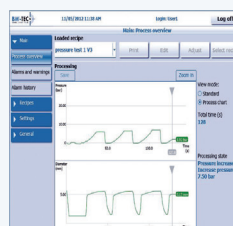
Dialogs on the display lead the user through the test program. This results in precise reproducible and reliable tests.



Measuring gauge



Luer-Lock Connection



HMI

### Technical Specifications

- Test pressure 0–50 bar (0–5.0 MPa)
- Tolerance  $\pm 0.1$  bar (0.01 MPa)
- Connection Luer Lock (Male)
- Bottle for clean water
- Simple user interface with BW-TEC HMI on touch-screen
- PLC Controller and Tablet-PC for HMI and Data management
- Network compatible
- 0.001 mm Mitutoyo measuring gauge
- Dimensions LxWxH 700 x 300 x 300 mm
- Weight 25 kg
- Power 115/230 VAC, 400W

### BW-TEC AG

HOFSTRASSE 1  
CH-8181 HÖRI  
SWITZERLAND  
TEL +41 44 863 70 70  
FAX +41 44 863 70 79  
info@bwtec.com  
www.bwtec.com