

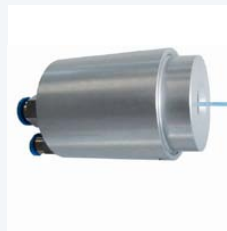


BALLOON MOULDING MACHINE 81

The **Balloon Moulding Machine**, used for the production of plastic balloons for angioplasty, is equipped with four (six) product fixtures. The tube, placed in a 3-part mould is held together by a clamp equipped with a weight in order to achieve the necessary pulling force during the moulding process. The process pressure ranges up to 50 bar, (5 MPa) and the required temperature is transferred by using heated DI water from 96°C. Moreover, the process parameters for specific products can be stored in separate menus.



Product connection



Product clamp



User interface

Technical Specifications

- Performance: up to 500 balloons per shift
- Working platform with implemented containers in stainless steel
- Heated water container equipped with electrical heating elements (2 KW), level controller and thermostat
- PID-controlled process temperatures: 96°C for moulding and 10°C for cooling down of the moulds
- Chilling container equipped with cooling compressor
- X and Z axis precision linear slide driven by stepper motor
- Pneumatically actuated fasteners are used for holding the product
- Process pressure up to 50 bar (5 MPa) controlled by an electronic pressure controller
- The actual pressure is shown on the PLC screen
- Low pressure system 6–10 bar (0.6–1.0 MPa) for product fixation
- PLC controller with user interface for programming of all parameters
- Memory modules for 200 menus
- Dimensions LxVxH 1000 x 800 x 1800 mm
- Weight 180 kg
- Power 3 x 400 VAC
4000 W
others upon request

BW-TEC AG

HOFSTRASSE 1
CH-8181 HÖRI
SWITZERLAND
TEL +41 44 863 70 70
FAX +41 44 863 70 79
www.bwtec.com